

GALA

COLLECTION



LORI WEITZNER
for SAMUEL & SONS

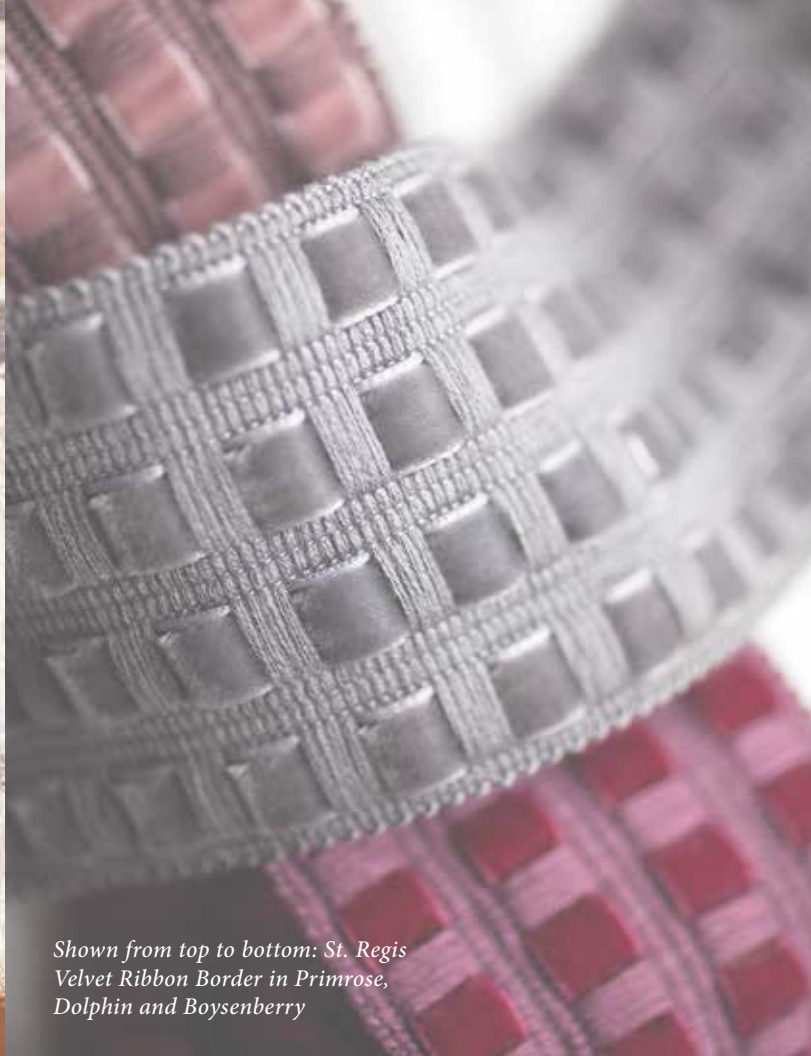


Lori Weitzner, principal and creative director of her own New York-based firm, is internationally known for designs which cross a multitude of disciplines. Her aim throughout her product lines is to conceive high quality design that emotionally appeals to a broad range of markets. Lori's recognizable signature is a sophisticated color palette, intricate, dimensional textures and a lyrical, painterly approach to pattern. A world traveler, she not only balances clients from many countries but incorporates diverse cultures and histories into the themes of her work.



*Carnegie Hall Ring
Holdback in Fawn*

Shown clockwise from top left: Carlyle Silk Satin Border in Koala and Taffy, and Plaza Basketweave Border in Wheat and Flint



Shown from top to bottom: St. Regis Velvet Ribbon Border in Primrose, Dolphin and Boysenberry

Samuel & Sons, the premier passementerie tradition in the interior design community, introduces the Gala collection by Lori Weitzner. Gala takes inspiration from renowned New York landmarks and translates them into timeless patterns using a range of materials, techniques, and textures designed to evoke a sense of modern luxury. Gala includes 6 dynamic tapes and a contemporary holdback.

“I love New York. I was inspired by the renowned neighborhoods that are a part of my everyday life and drew on art deco details and architectural elements that surround me.”

- LORI WEITZNER

Shown from top to bottom: Le Cirque Embroidered Border in Sage and Wildflower.



The Gramercy Border features a geometric pattern resulting in a structured finish that echoes the skyscraper skyline of Manhattan. Inspired by the iconic skyscraper with the same name, the Chrysler Border features a hexagonal repeat. The St. Regis Velvet Ribbon border is a tone-on-tone tape with an elegant yet understated dimensionality.



Shown from left to right: Chrysler Embroidered Border in Mist, St. Regis Velvet Ribbon Border in Pebble and Gramercy Border in Forest



Shown from top to bottom: Gramercy Border in Sand, Mocha, Pewter, Lake, Aluminum, Eggplant, Carnelian and Forest

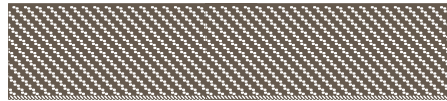


Shown from left to right: Chrysler Embroidered Border in Thistle, Steel, Mist and Cream.

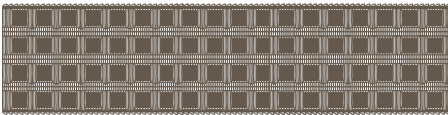
Gala Collection



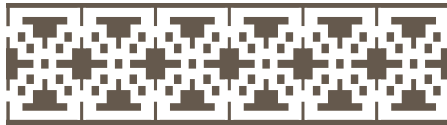
2" (50mm) Carlyle Silk Satin Border
is available in Alabaster, Angora, Snow, Dove, Cashew, Heather, Caspian, Sprig, Koala, Gunmetal, Coconut Shell, Saffron, Taffy, Cayenne, Crimson, Maritime, Emerald, and Manta Ray



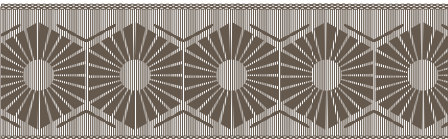
2" (49mm) Plaza Basketweave Border
is available in Sail, Armor, Ivory, Wheat, Gold, Dew, Aloe, Tidepool, Papaya, Cranberry, Clove, Flint, Ink, and Espresso



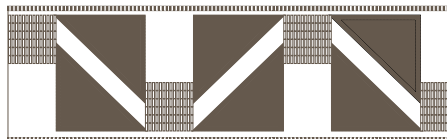
2.3" (58mm) St. Regis Velvet Ribbon Border
is available in Frost, Mallow, Pebble, Blue Note, Basil, Dolphin, Primrose, Adobe, Boysenberry, Orion, and Espresso



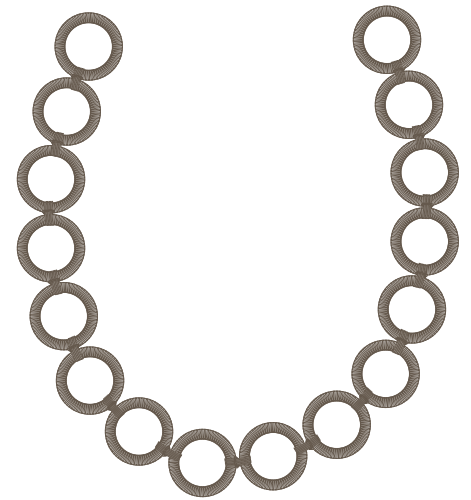
3" (78mm) Gramercy Border
is available in Cornsilk, Sand, Mocha, Pewter, Lake, Spruce, Garden, Forest, Eggplant, Carnelian, and Aluminum



2.75" (69mm) Chrysler Embroidered Border
is available in Canvas, Cream, Thistle, Iceberg, Cloud, Mist, and Steel



3" (75mm) Le Cirque Embroidered Border
is available in Moonstone, Wildflower, Sage, and Slate



36.5" (92.5cm) Carnegie Hall Ring Holdback
is available in Powder White, Chromium, Fawn, Raven, Tinsel, and Antique Gold

Shown on cover from left to right:
Le Cirque Embroidered Border in
Moonstone, Sage and Slate.

Fabrics and wallcoverings
courtesy of: Weitzner, Inc.

Area carpet courtesy of:
Van Den Loom